

StudyExam4Less
A Division of My Learning Camp, Inc.

770-456-5430

Delivered by

<http://www.StudyExam4Less.com>

Buy this product today

And SAVE BIG

Enter Coupon code : DEMO

(This coupon code entitles you 5% discount)
(offer subject to withdrawal without notice)

CopyRight 2004 <http://www.StudyExam4Less.com>

ExamWise
For
Designing a Microsoft Windows 2000
Network Infrastructure
Examination 70-221



Online practice exam provided by
BeachFront Quizzer, Inc., Friendswood, Texas
www.bfqonline.com

Author
Michael Yu Chak Tin
Published by



TotalRecall Publications, Inc.
1103 Middlecreek
Friendswood, TX 77546
281-992-3131

NOTE: THIS IS BOOK IS GUARANTEED:

See details at www.TotalRecallPress.com

TotalRecall Publications, Inc.

This Book is sponsored by BeachFront Quizzer, Inc.

Copyright © 2003 by TotalRecall Publications, Inc. All rights reserved. Printed in the United States of America. Except as permitted under the United States Copyright Act of 1976, No part of this publication may be reproduced, stored in a retrieval system, or transmitted in any form or by any means electronic or mechanical or by photocopying, recording, or otherwise without the prior permission of the publisher.

The views expressed in this book are solely those of the author, and do not represent the views of any other party or parties.

Printed in United States of America
Printed and bound by Data Duplicators of Houston Texas
Printed and bound by Lightning Source, Inc. in the USA and UK

ISBN: 1-59095-622-2
UPC: 6-43977-03221-8

The sponsoring editor is Bruce Moran and the production supervisor is Corby R. Tate.

Worldwide eBook publication and distribution by:



This publication is not sponsored by, endorsed by, or affiliated with Microsoft, Inc. The “Windows® 2000, MCSE™, MCSD™, MCSE+I™, MCT™” Microsoft logos are trademarks or registered trademarks of Microsoft, Inc. in the United States and certain other countries. All other trademarks are trademarks of their respective owners. Throughout this book, trademarked names are used. Rather than put a trademark symbol after every occurrence of a trademarked name, we used names in an editorial fashion only and to the benefit of the trademark owner. No intention of infringement on trademarks is intended.

Disclaimer Notice: Judgments as to the suitability of the information herein for purchaser’s purposes are necessarily the purchaser’s responsibility. BeachFront Quizzer, Inc. and TotalRecall Publications, Inc. extends no warranties, makes no representations, and assumes no responsibility as to the accuracy or suitability of such information for application to the purchaser’s intended purposes or for consequences of its use.

Table of Contents

About the Author	IV
About the Editor	V
About the Book.....	V
About Online Testing.....	V
Introduction	VIII
Forward	Error! Bookmark not defined.
About 70-221 Certification	X
Skills Being Measured	XI
Case Study 1: Rocky Mountain School of Music	1
Case Study 2: W2K Network Consulting Service	29
Case Study 3: Excel Forwarder Corp	55
Case Study 4: Joe’s Canoe Company	73
Case Study 5: ABC Toys	93
Case Study 6: MediAssociate	113
Case Study 7: Kellok Accounting Service	135
Case Study 8: ProX Auditing Group	157
Case Study 9: ExGovern	179
Case Study 10: ProTax	201
Case Study 11: B2B Expert	215
Case Study 12: SBP Associates	229
Case Study 13: SamuraiPro Trading Company	243
Case Study 14: LaserPoint	257
Case Study 15: MyTeapots	271
Case Study 16: LoveSherpa	285
Money Back Book Guarantee	299
70-221 Free Practice Exam Online	300



Case Study 1: Rocky Mountain School of Music

You are a Network Consultant with specialized skills in designing Win2000 directory services. You are recently requested by the Rocky Mountain School of Music to design the Windows 2000 network for the entire school.

School Mission

The mission of the Rocky Mountain School of Music is to advance the art of music and its related disciplines. It seeks to educate students in the various fields of the profession and to promote an understanding of music. The School endeavors to preserve diverse repertoires and cultural traditions while also creating opportunities for artistic, intellectual, and scholarly innovation in the realm of music. The School is dedicated to excellence in research, performance, composition, and teacher education, undertaken in a spirit of collaboration among its own constituents.

School Background

The Rocky Mountain School of Music is consistently ranked among the strongest professional music schools in Canada. It attracts outstanding students and faculty in composition-theory, music education, musicology, and performance. The school is large enough to provide a wide variety of experience for students seeking degrees in music. At the same time, the atmosphere of a smaller school prevails with emphasis on individualized instruction in performance, comparatively small classes, and a faculty and staff that cares about its students. As a significant cultural resource, the School of Music serves the musical needs of the community, the region, the state, and the nation, and its influence is felt on an international level as well. One measure of a university's quality is the success of its graduates. Among the more than 10,000 alumni of the School of Music are 5 Pulitzer Prize winners in composition; members of major symphony orchestras, opera companies, jazz ensembles, and professional choral groups; and faculty members at many of the nation's most prestigious colleges and universities. Music education graduates direct some of the finest elementary and secondary music programs throughout Canada as well as in foreign countries. The school is proud of its record in assisting qualified graduates to assume leadership roles in the music profession through career counseling and professional advising.



2 Case Study 1

Programs Offered

The Rocky Mountain School of Music has two different degree programs available:

Bachelor of Music

Specializations available in:

Applied Music

Composition-Theory

Music History

Open Studies

Bachelor of Music Education

Specializations available in:

Choral Music

General Music

Instrumental Music

Divisions

The school currently has the following divisions:

Brass

Composition-Theory

Music Education

Musicology

String

Woodwind

Accompanying

Jazz

Organ

Percussion

Piano

Piano Pedagogy

Voice Divisions



Faculties

The strength of the school lies in its distinguished and internationally known faculty, who are committed to teaching and at the same time maintain active performance schedules, contribute substantially to research in all areas of music. The school is justifiably proud of the excellent facilities, nationally recognized degree programs, and enjoyable campus life, but these are secondary considerations when compared to the quality education provided by the faculty for the students.

The professional relationship between students and faculty is based upon mutual respect and a common interest in the quest for musical knowledge and artistry. There are nearly 100 full-time faculty members in music, which provides a student to faculty ratio of approximately 20 to 1. The wealth of experience the faculties bring to the classroom, studio, concert hall, or research facility, is supported by their continuous commitment to excellence.

Buildings and Facilities

Currently the school has the following buildings:

Rocky Band Building
Computer-Assisted Music Lab
Music Project Lab
Experimental Music Lab
Performing Arts Lab
Music Library Building
School of Piano Building
Jeff Memorial Hall

Admin Structure

The school has a Board of Directors for supervising the overall operations. The school president reports directly to the board. There are 2 vice presidents sharing the workload of administering the divisions of the school.



4 Case Study 1

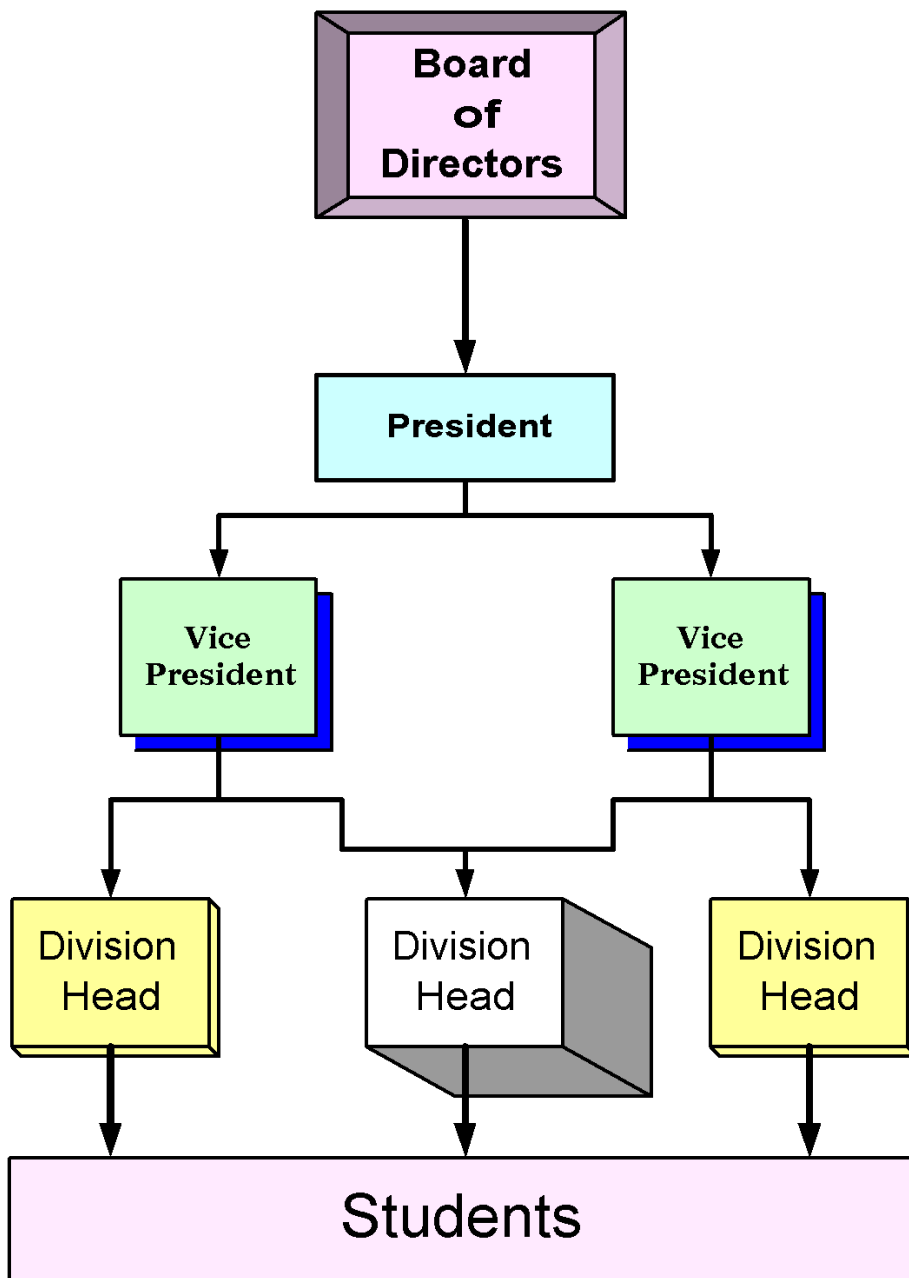


Figure 1.1: Organizational chart of the school and its Board of Directors.



IT Infrastructure

There are currently 2 IT staffs in the school. The existing network is purely DOS-based with Netware 3.1 as the network OS. No special feature has been implemented.

The registration office currently runs a 386PC with dBase3+ as the school registration system. The staffs generally use the old Geoworks software for designing flyers and other publications.

Due to the availability of funding last year, the school managed to install a 100BaseFX network across the campus. In terms of bandwidth, the school has more than enough bandwidth for use.

Levels of Skills in IT

According to the IT Supervisor of the school, their students are very positive towards the use of IT in their learning process. Some students already uses computer to do the music composition. Others have uses notebooks to take notes during lectures.

Risk Management

In the past the school was once in difficulties due to a problem in funding. There had been a situation where the salaries of the teachers were not distributed on time, leading to a strike and a delay in the class progresses. Although this situation is not likely to happen again, the management insists on carry out a risk management process. It has been suggested that Microsoft's Risk Management process is the ideal methodology to use.

Future Vision

The school plans to open a branch in Austin, Texas. The management is willing to pay for a high speed 128K dedicated connection between the main campus and the new location. This new location will mainly be used to teach Music History and Music Appreciation.

The school will also open up a branch in London. This new location will use dial up modem to connect to the main office. This new location will mainly be a marketing office to promote the school's "Student Exchange" program.



6 Case Study 1



1. Which of the following can be achieved by preparing a capacity plan for the school?
 - A. Estimated minimum figure of network usage
 - B. Estimated maximum figure of network usage
 - C. Estimated average figure of network usage
 - D. No Answer is Correct
-

2. Which of the following should be documented in a capacity plan for the school?
 - A. Data collected from Sniffer
 - B. Network utilization data
 - C. Annual return of the company
 - D. No Answer is Correct



8 Case Study 1

1. Which of the following can be achieved by preparing a capacity plan for the school?

- *A. Estimated minimum figure of network usage
- *B. Estimated maximum figure of network usage
- *C. Estimated average figure of network usage
- D. No Answer is Correct

Explanation: All these info should be figured out in the capacity plan.

BFQ Skill: Understanding Business Requirement Analysis

2. Which of the following should be documented in a capacity plan for the school?

- *A. Data collected from Sniffer
- *B. Network utilization data
- C. Annual return of the company
- D. No Answer is Correct

Explanation: You should use Sniffer to capture statistics about the network and use the data as the base for planning capacity.

BFQ Skill: Understanding Business Requirement Analysis



Questions 9

3. Which of the following can be shown in a hierarchical diagram you designed for the school?
- A. Business objects within the school
 - B. Organization of the business objects
 - C. Entity relationships
 - D. No Answer is Correct
-

4. Before you do the Windows 2000 upgrade, you are asked to determine what existing components in the network will meet the minimum requirement for the new Windows 2000 network. What type of analysis is this?
- A. Upgrade Analysis
 - B. Installation Analysis
 - C. Optimization Analysis
 - D. Gap Analysis



10 Case Study 1

3. Which of the following can be shown in a hierarchical diagram you designed for the school?

***A. Business objects within the school**

***B. Organization of the business objects**

C. Entity relationships

D. No Answer is Correct

Explanation: This is often an organization chart for the company.

BFQ Skill: Analyzing the Existing and Planned Business Model

4. Before you do the Windows 2000 upgrade, you are asked to determine what existing components in the network will meet the minimum requirement for the new Windows 2000 network. What type of analysis is this?

A. Upgrade Analysis

B. Installation Analysis

C. Optimization Analysis

***D. Gap Analysis**

Explanation: It is a good idea to perform a GAP analysis before going for the upgrade.

BFQ Skill: Analyzing the Existing and Planned Business Model



5. Before you do the Windows 2000 upgrade, you are asked to perform a gap analysis for the new Windows 2000 network. Which of the following is the first step in your analysis?
- A. Look at how the new system is working for the school
 - B. Look at how the current system is retired
 - C. Look at how the current system is working for the school
 - D. No Answer is Correct
-

6. Before you do the Windows 2000 upgrade, you are asked to perform a gap analysis for the new Windows 2000 network. Which of the following is the step in your analysis after looking at how the new system will fit in to the school?
- A. Review the current documentation
 - B. Look at how the current system is retired
 - C. Look at how the current system is working for the school
 - D. Review the new system documentation
 - E. No Answer is Correct



12 Case Study 1

5. Before you do the Windows 2000 upgrade, you are asked to perform a gap analysis for the new Windows 2000 network. Which of the following is the first step in your analysis?
- A. Look at how the new system is working for the school
 - B. Look at how the current system is retired
 - *C. Look at how the current system is working for the school**
 - D. No Answer is Correct

Explanation: Next you want to find out how the new system will fit in.

BFQ Skill: Analyzing the Existing and Planned Business Model

6. Before you do the Windows 2000 upgrade, you are asked to perform a gap analysis for the new Windows 2000 network. Which of the following is the step in your analysis after looking at how the new system will fit in to the school?
- *A. Review the current documentation**
 - B. Look at how the current system is retired
 - C. Look at how the current system is working for the school
 - D. Review the new system documentation
 - E. No Answer is Correct

Explanation: You will be finding out the detailed information on the software and hardware currently installed.

BFQ Skill: Analyzing the Existing and Planned Business Model



7. Before you do the Windows 2000 upgrade, you are asked to perform a gap analysis for the new Windows 2000 network. Which of the following is the last step in your analysis?
- A. Review the current documentation
 - B. Look at how the current system is retired
 - C. Look at how the current system is working for the school
 - D. Review the new system documentation
 - E. Look at the tasks the users perform
-

8. The school plans to implement video conferencing between the locations. Quality of the video and voice is important. An external vendor suggests the use of 256k frame relay for the locations. Which of the following will you do?
- A. Approve
 - B. Disapprove
 - C. Approve only for the main campus
 - D. Approve only for the branches
 - E. No Answer is Correct



14 Case Study 1

7. Before you do the Windows 2000 upgrade, you are asked to perform a gap analysis for the new Windows 2000 network. Which of the following is the last step in your analysis?

- A. Review the current documentation
- B. Look at how the current system is retired
- C. Look at how the current system is working for the school
- D. Review the new system documentation

***E. Look at the tasks the users perform**

Explanation: Make sure the new system will assist in their current workflow.

BFQ Skill: Analyzing the Existing and Planned Business Model

8. The school plans to implement video conferencing between the locations. Quality of the video and voice is important. An external vendor suggests the use of 256k frame relay for the locations. Which of the following will you do?

A. Approve

***B. Disapprove**

C. Approve only for the main campus

D. Approve only for the branches

E. No Answer is Correct

Explanation: 256K Frame Relay is not enough for video conferencing.

BFQ Skill: Analyzing the Company Model and the Geographic Scope



9. All the schools in town want to form an alliance. In this alliance there is a network infrastructure that span the town. Which of the following truly describe this infrastructure?
- A. It is a LAN
 - B. It is a WAN
 - C. It is a MAN
 - D. No Answer is Correct
-

10. Which of the following is a tool that can show where the business processes are not working?
- A. Business objects within the school
 - B. Organization of the business objects
 - C. Data flow diagram
 - D. Entity relationships diagram



16 Case Study 1

9. All the schools in town want to form an alliance. In this alliance there is a network infrastructure that span the town. Which of the following truly describe this infrastructure?
- A. It is a LAN
 - B. It is a WAN
 - *C. It is a MAN**
 - D. No Answer is Correct

Explanation: MAN shorts for Metropolitan Area Network.

BFQ Skill: Analyzing the Company Model and the Geographic Scope

10. Which of the following is a tool that can show where the business processes are not working?
- A. Business objects within the school
 - B. Organization of the business objects
 - *C. Data flow diagram**
 - D. Entity relationships diagram

Explanation: You use Data flow diagram to identify many of the issues in the business processes.

BFQ Skill: Analyzing the Company Processes



Other Microsoft Certification books by TotalRecall Publications

**InsideScoop to MCP / MCSE Certification: Microsoft
Windows 2000 Network Infrastructure Exam 70-221**

**InsideScoop to MCP / MCSE Certification: Microsoft
Windows 2000 Network Infrastructure Exam 70-221**

**ExamWise For MCP / MCSE Certification: Microsoft
Windows 2000 Professional Exam 70-210**

**ExamWise For MCP / MCSE Certification: Microsoft
Windows 2000 Server Exam 70-215**

**ExamWise For MCP / MCSE Certification: Windows 2000
Directory Services Infrastructure Exam 70-216**

**ExamWise For MCP / MCSE Certification: Microsoft
Directory Services Infrastructure Exam 70-217**

**ExamWise For MCP / MCSE Certification: Security for a
Microsoft Windows 2000 Network Exam 70-219**

**ExamWise For MCP / MCSE Certification: Microsoft
Windows 2000 Network Infrastructure Exam 70-220**

**ExamWise For MCP / MCSE Certification: Microsoft Internet
Security and Acceleration (ISA) Server 2000, Enterprise
Edition Exam 70-227**

**ExamWise For MCP / MCSE Certification: Installing,
Configuring, and Administering Microsoft Windows XP
Professional Exam 70-270**



BeachFront Direct

**If you can PASS our Simulated Exam,
We Guaranty you will PASS the Real Exam.**

Call

877-654-2265

727-450-0476

www.bfqd.com

www.BeachFrontDirect.com

StudyExam4Less

A Division of My Learning Camp, Inc.

770-456-5430

StudyExam4Less.com offers great quality study guides at very affordable prices.

Check them out at

<http://www.StudyExam4Less.com>

- **CompTIA**
- **Microsoft**
- **Cisco**
- **Novell**

Take our word! You will like it.

That is not all. Enjoy our 5% additional discount. Enter

Coupon code: DEMO at <http://www.StudyExam4Less.com>

(offer subject to withdrawal without notice)

CopyRight 2004 <http://www.StudyExam4Less.com>