

StudyExam4Less
A Division of My Learning Camp, Inc.

770-456-5430

Delivered by

<http://www.StudyExam4Less.com>

Buy this product today

And SAVE BIG

Enter Coupon code : DEMO

(This coupon code entitles you 5% discount)
(offer subject to withdrawal without notice)

CopyRight 2004 <http://www.StudyExam4Less.com>

**ExamWise
For
Designing a Microsoft Windows 2000
Directory Services Infrastructure
Examination 70-219**



**Online practice exam provided by
BeachFront Quizzer, Inc.,
Friendswood, Texas
www.bfqonline.com**

**Author
Jeffrey R. Shapiro**

Published by



TotalRecall Publications, Inc.
1103 Middlecreek
Friendswood, TX 77546
281-992-3131

NOTE: THIS IS BOOK IS GUARANTEED:

See details at www.TotalRecallPress.com

TotalRecall Publications, Inc.

This Book is sponsored by BeachFront Quizzer, Inc.

Copyright © 2003 by TotalRecall Publications, Inc. All rights reserved. Printed in the United States of America. Except as permitted under the United States Copyright Act of 1976, No part of this publication may be reproduced, stored in a retrieval system, or transmitted in any form or by any means electronic or mechanical or by photocopying, recording, or otherwise without the prior permission of the publisher.

The views expressed in this book are solely those of the author, and do not represent the views of any other party or parties.

Printed in United States of America
Printed and bound by Data Duplicators of Houston Texas
Printed and bound by Lightning Source, Inc. in the USA and UK

ISBN: 1-59095-620-6
UPC Number 6-43977-03219-5

The sponsoring editor is Bruce Moran and the production supervisor is Corby R. Tate.

Worldwide eBook publication and distribution by:



This publication is not sponsored by, endorsed by, or affiliated with Microsoft, Inc. The “Windows® 2000, MCSE™, MCSA™, MCSE+I™, MCT™” Microsoft logos are trademarks or registered trademarks of Microsoft, Inc. in the United States and certain other countries. All other trademarks are trademarks of their respective owners. Throughout this book, trademarked names are used. Rather than put a trademark symbol after every occurrence of a trademarked name, we used names in an editorial fashion only and to the benefit of the trademark owner. No intention of infringement on trademarks is intended.

Disclaimer Notice: Judgments as to the suitability of the information herein for purchaser’s purposes are necessarily the purchaser’s responsibility. BeachFront Quizzer, Inc. and TotalRecall Publications, Inc. extends no warranties, makes no representations, and assumes no responsibility as to the accuracy or suitability of such information for application to the purchaser’s intended purposes or for consequences of its use.

Table of Contents

About the Author	IV
About the Contributing Author.....	IV
About the Book.....	V
About Online Testing.....	V
About 70-219 Certification	VIII
Skills Being Measured	IX
Case Study 1 Rocky Mountain School of Music.....	1
Case Study 2 W2K Network Consulting Service	29
Case Study 3 Excel Forwarder Corp.....	57
Case Study 4 Joe’s Canoe Company	81
Case Study 5 ABC Toys.....	101
Case Study 6 MediAssociate.....	121
Case Study 7 Kellok Accounting Service.....	143
Case Study 8 ProX Auditing Group	165
Case Study 9 ExGovern	187
Case Study 10 ProTax.....	203
Case Study 11 B2Bexpert.....	227
Case Study 12 SBP Associates.....	241
Case Study 13 SamuraiPro Trading Company	255
Case Study 14 LaserPoint	269
Case Study 15 MyTeapots	283
Case Study 16 LoveSherpa	297
Case Study 17 ProSKI	311
Case Study 18 SupremeX Military Consultant.....	325
Money Back Book Guarantee.....	339
Free Practice Exam Online	340



Case Study 1

Rocky Mountain School of Music

You are a Network Consultant with specialized skills in designing Win2000 directory services. You are recently requested by the Rocky Mountain School of Music to design the Active Directory for the entire school.

School Mission

The mission of the Rocky Mountain School of Music is to advance the art of music and its related disciplines. It seeks to educate students in the various fields of the profession and to promote an understanding of music. The School endeavors to preserve diverse repertoires and cultural traditions while also creating opportunities for artistic, intellectual, and scholarly innovation in the realm of music. The School is dedicated to excellence in research, performance, composition, and teacher education, undertaken in a spirit of collaboration among its own constituents.

School Background

The Rocky Mountain School of Music is consistently ranked among the strongest professional music schools in Canada. It attracts outstanding students and faculty in composition-theory, music education, musicology, and performance. The school is large enough to provide a wide variety of experience for students seeking degrees in music. At the same time, the atmosphere of a smaller school prevails with emphasis on individualized instruction in performance, comparatively small classes, and a faculty and staff that cares about its students. As a significant cultural resource, the School of Music serves the musical needs of the community, the region, the state, and the nation, and its influence is felt on an international level as well.



2 Case Study 1

One measure of an university's quality is the success of its graduates. Among the more than 10,000 alumni of the School of Music, five (5) are Pulitzer Prize winners in composition; members of major symphony orchestras, opera companies, jazz ensembles, and professional choral groups; and faculty members at many of the nation's most prestigious colleges and universities. Music education graduates direct some of the finest elementary and secondary music programs throughout Canada as well as in foreign countries. The school is proud of its record in assisting qualified graduates to assume leadership roles in the music profession through career counseling and professional advising.

Programs Offered

The Rocky Mountain School of Music has 2-degree programs available:

Bachelor of Music

Specializations available in:

- Applied Music
- Composition-Theory
- Music History
- Open Studies

Bachelor of Music Education

Specializations available in:

- Choral Music
- General Music
- Instrumental Music



Divisions

The school currently has the following divisions:

- Brass
- Composition-Theory
- Music Education
- Musicology
- String
- Woodwind
- Accompanying
- Jazz
- Organ
- Percussion
- Piano
- Piano Pedagogy
- Voice Divisions

Faculties

The strength of the school lies in its distinguished and internationally known faculty, who are committed to teaching and at the same time maintain active performance schedules, contribute substantially to research in all areas of music. The school is justifiably proud of the excellent facilities, nationally recognized degree programs, and enjoyable campus life, but these are secondary considerations when compared to the quality education provided by the faculty for the students.

The professional relationship between students and faculty is based upon mutual respect and a common interest in the quest for musical knowledge and artistry. There are nearly 100 full-time faculty members in music, which provides a student to faculty ratio of approximately 20 to 1. The wealth of experience the faculties bring to the classroom, studio, concert hall, or research facility, is supported by their continuous commitment to excellence.



4 Case Study 1

Buildings and Facilities

Currently the school has the following buildings:

- Rocky Band Building
- Computer-Assisted Music Lab
- Music Project Lab
- Experimental Music Lab
- Performing Arts Lab
- Music Library Building
- School of Piano Building
- Jeff Memorial Hall

IT Infrastructure

There are currently 2 IT staffs in the school. The existing network is purely DOS-based with Netware 3.1 as the network OS. No special feature has been implemented.

The registration office currently runs a 386PC with dBase3+ as the school registration system. The staffs generally use the old Geoworks software for designing flyers and other publications.

Due to the availability of funding last year, the school managed to install a 100BaseFX network across the campus. In terms of bandwidth, the school has more than enough bandwidth for use.

Levels of Skills in IT

According to the IT Supervisor of the school, their students are very positive towards the use of IT in their learning process. Some students already use computers to do the music composition. Others use notebooks to take notes during lectures.



Admin Structure

The school has a Board of Directors for supervising the overall operations. The school president reports directly to the board. There are 2 vice presidents sharing the workload of administering the divisions of the school, as demonstrated in Figure 1.1.

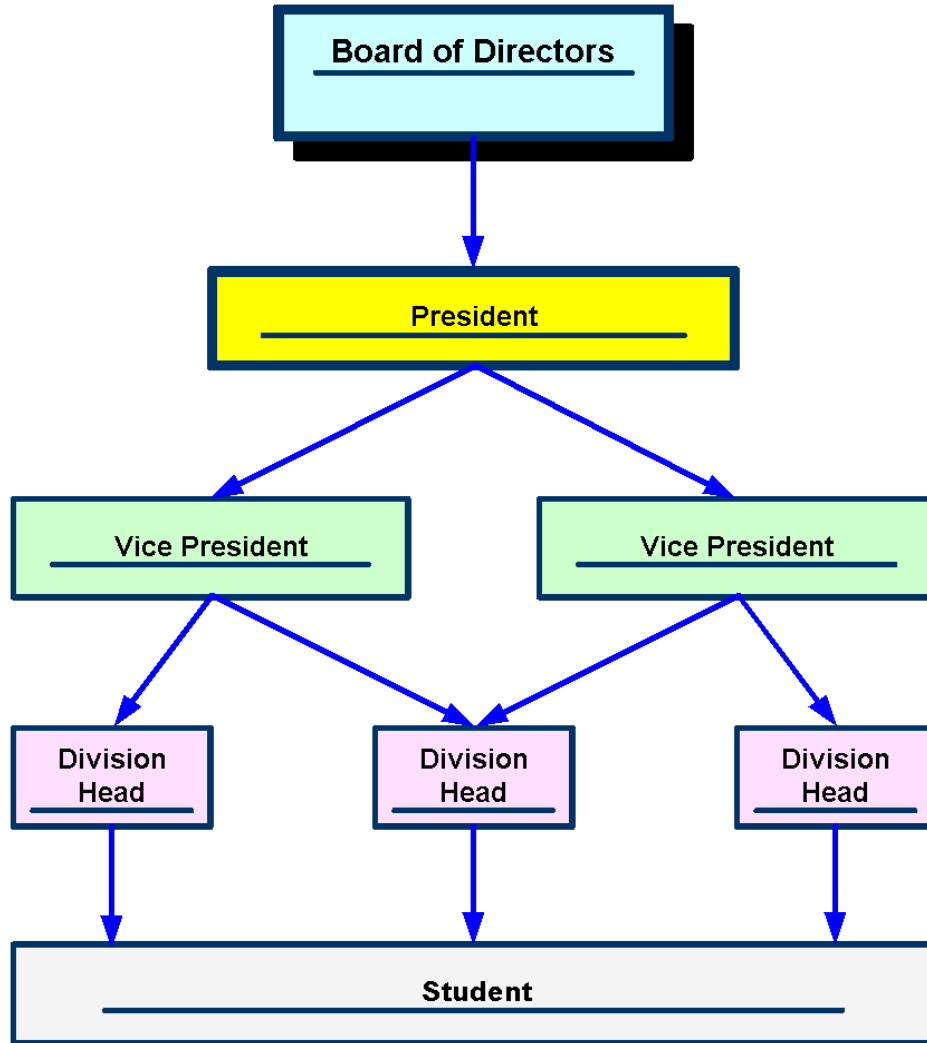


Figure 1.1: Organizational chart of the school and its Board of Directors.



6 Case Study 1

Risk Management

In the past, the school was once in difficulties due to a problem in funding. There had been a situation where the salaries of the teachers were not distributed on time, leading to a strike and a delay in the class progresses. Although this situation is not likely to happen again, the management insists on carry out a risk management process. It has been suggested that Microsoft's Risk Management process is the ideal methodology to use.

Future Vision

The school plans to open a branch in Austin, Texas. The management is willing to pay for a high speed 128K dedicated connection between the main campus and the new location. This new location will mainly be used to teach Music History and Music Appreciation.

The school will also open up a branch in London. This new location will use dial up modem to connect to the main office. This new location will mainly be a marketing office to promote the school's "Student Exchange" program.



1. What type of business model does the school have?

Describe:

A. Hierarchical

B. Flat

C. Levels of Skills in IT. According to the IT Supervisor of the school, their students are very positive towards the use of IT in their learning process. Some students already uses computer to do the music composition. Others have uses notebooks to take notes during lectures.

D. No model



2. As part of your initial work of analyzing the business model, you are looking at how many servers are in the sites of the school as well as what OS and applications are running. What kind of structure are you trying to analyze?

A. Organizational

B. Demographical

C. Geographical

D. IT



8 Case Study 1

1. What type of business model does the school have?

Describe:

***A. Hierarchical**

B. Flat

C. Levels of Skills in IT. According to the IT Supervisor of the school, their students are very positive towards the use of IT in their learning process. Some students already uses computer to do the music composition. Others have uses notebooks to take notes during lectures.

D. No model

Explanation: This is a pyramidal command structure cascading from the top down to the base. Map to the Objective Analyzing existing Business Models

2. As part of your initial work of analyzing the business model, you are looking at how many servers are in the sites of the school as well as what OS and applications are running. What kind of structure are you trying to analyze?

A. Organizational

B. Demographical

C. Geographical

***D. IT**

Explanation: You are inspecting the IT infrastructure of the school. Map to the Objective Analyzing existing Business Models



Questions 9

3. The staffs in the school frequently have to rotate their duties and work in different divisions. You need to build the AD structure so that the directory can reflect the organization structure of the school and at the same time making administration as easy as possible. Which of the following will you prefer?
- A. Deploy OUs for the different divisions
 - B. Deploy Active domains for each divisions
 - C. Deploy Win2K for the different divisions
 - D. Deploy Multiple Master domain for the different divisions
-

4. Which of the following activities are parts of the risk management process's risk identification phrase (Choose all that apply)?
- A. Identifying the source of risk
 - B. Determining the risk condition
 - C. Identifying the possible consequence
 - D. Analyzing risk impact



10 Case Study 1

3. The staffs in the school frequently have to rotate their duties and work in different divisions. You need to build the AD structure so that the directory can reflect the organization structure of the school and at the same time making administration as easy as possible. Which of the following will you prefer?

***A. Deploy OUs for the different divisions**

- B. Deploy Active domains for each divisions
- C. Deploy Win2K for the different divisions
- D. Deploy Multiple Master domain for the different divisions

Explanation: It is much easier for you to move user objects between OUs then to move user objects between domains. In this case OU is the ideal structure. Map to the Objective Analyzing existing Business Models

-
4. Which of the following activities are parts of the risk management process's risk identification phrase (Choose all that apply)?

***A. Identifying the source of risk**

***B. Determining the risk condition**

***C. Identifying the possible consequence**

- D. Analyzing risk impact

Explanation: Analyzing risk impact is part of the Risk Analysis phrase. Map to the Objective Identifying Tolerance for Risk



5. Which of the following activities are parts of the risk management process's risk analysis phase (Choose all that apply)?
- A. Identifying the source of risk
 - B. Determining the risk condition
 - C. Analyzing risk exposure
 - D. Analyzing risk probability
 - E. Analyzing risk impact
-

6. You are studying the previous case of the school regarding the incident that the teachers went on strike. You tried to learn from the case to determine that, if, the same thing happen again, what the impact will be towards your project schedule. What type of analysis is this?
- A. Risk Probability
 - B. Risk Impact
 - C. Risk Exposure
 - D. Risk Projection
 - E. Risk Management



12 Case Study 1

5. Which of the following activities are parts of the risk management process's risk analysis phrase (Choose all that apply)?

- A. Identifying the source of risk
- B. Determining the risk condition

***C. Analyzing risk exposure**

***D. Analyzing risk probability**

***E. Analyzing risk impact**

Explanation: Identifying the source of risk, Determining the risk condition, and Analyzing risk exposure are parts of the Risk Identification phrase. Map to the Objective Identifying Tolerance for Risk

6. You are studying the previous case of the school regarding the incident that the teachers went on strike. You tried to learn from the case to determine that, if, the same thing happen again, what the impact will be towards your project schedule. What type of analysis is this?

- A. Risk Probability

***B. Risk Impact**

- C. Risk Exposure
- D. Risk Projection
- E. Risk Management

Explanation: This is an evaluation of a consequence should it become real. Map to the Objective Identifying Tolerance for Risk



7. You are evaluating the risks involved in upgrading the school network to Win2K. You come up with a risk probability of 0%. What does this mean?

- A. There is no risk at all
 - B. There is a high risk
 - C. There is already an actual problem
 - D. Not enough information to determine the risk level
-

8. You are to carry out a Risk Action Planning for the school. What are valid key areas to address (Choose all that apply)?

- A. Research
- B. Acceptance
- C. Management
- D. Avoidance



14 Case Study 1

7. You are evaluating the risks involved in upgrading the school network to Win2K. You come up with a risk probability of 0%. What does this mean?

***A. There is no risk at all**

B. There is a high risk

C. There is already an actual problem

D. Not enough information to determine the risk level

Explanation: When you have 100%, which means this is not even a risk.. the problem is already here. Map to the Objective Identifying Tolerance for Risk

8. You are to carry out a Risk Action Planning for the school. What are valid key areas to address (Choose all that apply)?

***A. Research**

***B. Acceptance**

***C. Management**

***D. Avoidance**

Explanation: These are the 4 areas of Risk Action Planning that must be addressed according to MS. Map to the Objective Identifying Tolerance for Risk



9. You are to carry out a Risk Analysis for the school. How do you determine the school's risk exposure?

- A. Risk probability X Risk impact
- B. Risk probability X Risk ratio
- C. Risk Ratio X Risk impact
- D. Risk Consequence X Risk impact



10. You need to determine the baseline of upgrading the school network. Which of the following are valid metrics to use?

- A. Comparison with other schools
- B. US Accounting standard on the assets cost
- C. True cost of assets
- D. Industry appointed index
- E. Industry average



16 Case Study 1

9. You are to carry out a Risk Analysis for the school. How do you determine the school's risk exposure?

***A. Risk probability X Risk impact**

B. Risk probability X Risk ratio

C. Risk Ratio X Risk impact

D. Risk Consequence X Risk impact

Explanation: Risk exposure basically factors risk impact and risk probability together. Map to the Objective Identifying Tolerance for Risk

10. You need to determine the baseline of upgrading the school network. Which of the following are valid metrics to use?

A. Comparison with other schools

B. US Accounting standard on the assets cost

C. True cost of assets

D. Industry appointed index

***E. Industry average**

Explanation: The cost of the school's assets should be compared to the industry average in order to compare the TCO figures. Map to the objective Identifying Cost of operations.



**Other Microsoft Certification books by
TotalRecall Publications**

**InsideScoop to MCP / MCSE Certification: Exam 70-219
Designing a Windows 2000 Directory Services
Infrastructure**

**ExamInsight For MCP / MCSE Certification: Exam 70-219
Designing a Windows 2000 Directory Services
Infrastructure**

**ExamWise For MCP / MCSE Certification: Exam 70-210
Managing Microsoft Windows 2000 Professional**

**ExamWise For MCP / MCSE Certification: Exam 70-215
Installing, Configuring, and Administering Microsoft
Windows 2000 Server**

**ExamWise For MCP / MCSE Certification: Exam 70-216
Implementing and Administering a Microsoft Windows 2000
Network Infrastructure**

**ExamWise For MCP / MCSE Certification: Exam 70-217
Managing a Microsoft Directory Services Infrastructure**

**ExamWise For MCP / MCSE Certification: Exam 70-218
Managing a Microsoft Windows 2000 Network Environment**

**ExamWise For MCP / MCSE Certification: Exam 70-220
Designing Security for a Microsoft Windows 2000 Network**

**ExamWise For MCP / MCSE Certification: Exam 70-221
Designing a Microsoft Windows 2000 Network Infrastructure**

**ExamWise For MCP / MCSE Certification: Exam 70-270
Microsoft Windows XP Professional**



BeachFront Direct

**If you can PASS our Simulated Exam,
We Guaranty you will PASS the Real Exam.**

Call

877-654-2265

727-450-0476

www.bfqd.com

www.BeachFrontDirect.com

StudyExam4Less

A Division of My Learning Camp, Inc.

770-456-5430

StudyExam4Less.com offers great quality study guides at very affordable prices.

Check them out at

<http://www.StudyExam4Less.com>

- **CompTIA**
- **Microsoft**
- **Cisco**
- **Novell**

Take our word! You will like it.

That is not all. Enjoy our 5% additional discount. Enter

Coupon code: DEMO at <http://www.StudyExam4Less.com>

(offer subject to withdrawal without notice)

CopyRight 2004 <http://www.StudyExam4Less.com>